



# KP201 PLC Adapter Manual

SHENZHEN KASDA DIGITAL TECHNOLOGY CO . , LTD

[www.kasda.cn](http://www.kasda.cn)

## NOTICE

---

This document contains proprietary information protected by copyright, and this Manual and all the accompanying hardware, software, and documentation are copyrighted. All rights are reserved. No part of this document may be photocopied or reproduced by mechanical, electronic, or other means in any form.

The manufacturer does not warrant that the hardware will work properly in all environments and applications, and makes no warranty or representation, either expressed or implied, with respect to the quality, performance, merchantability, or fitness for a particular purpose of the software or documentation. The manufacturer reserves the right to make changes to the hardware, software, and documentation without obligation to notify any person or organization of the revision or change.

All brand and product names are the trademarks of their respective owners.

SHENZHEN KASDA DIGITAL TECHNOLOGY CO., LTD

© Copyright 2014

All rights reserved.

# Content

<b>1</b>	<b>Overview</b>	<b>4</b>
1.1	Warnings and Cautions	4
1.2	System Requirements	5
1.3	Operating System Support	5
1.4	Packet Contents	5
<b>2</b>	<b>Hardware Description</b>	<b>6</b>
2.1	LED Indicator	6
2.2	Physical Interface	7
<b>3</b>	<b>Installation</b>	<b>8</b>
3.1	PC pre-configuration(Configured to dynamically access IP)	8
3.2	Hardware Connection	9
3.2.1	Hardware Connection - Computer	9
3.2.2	Hardware Connection - Internet	10

## 1 Overview

---

Thank you for choosing our product. The KP201 is an 200Mbps Powerline Ethernet Adapter which transforms your house's existing electrical wiring into an ubiquitous networking infrastructure. Simply plug this 200MbpsPowerline Ethernet Adapter into an ordinary AC power outlet which will easily extend your Cable/xDSL broadband connection or existing Ethernet (LAN) network to any other electrical outlet in any room of a house without the need of any new cabling. KP201 supports up to 200Mbps data rate, full multimedia application can easily be supported throughout the whole house in addition to Internet access.

### 1.1 Warnings and Cautions

- Never install during storm. There might be a risk of electric shock from lightening.
- Plug directly into wall socket (100Vac~240Vac). Do Not use an extension cord between this product and the AC power source.
- Do Not open this product or attempt to service this product, it may expose you to dangerous high voltage and other risks.
- To prevent dangerous overloading of the power circuit, be careful about the designed maximum power load ratings. Not to follow the rating guideline could result in a dangerous situation.
- Do Not operate this product near water.
- Do Not place or operate near or over radiator or heat register.
- Do Not expose this product to dampness, dust or corrosive liquids.
- Do Not connect this product and Disconnect from wall socket during a lightning or thunderstorm
- Do Not obstruct this product ventilation slots, as insufficient airflow may harm this product.
- Do Not put anything on this product.
- When plugging this product into wall socket, make sure that electrical socket are not damaged, and no leakage for gas or water pipes to begin with.
- Place the connecting cables carefully so people won't stumble or walk on it.
- The Powerline Adapter should be operated from the type of power indicated on the marking label. If you are not sure of the type of power available, consult the qualified technician.

- Unplug from the wall socket before cleaning. Use a damp cloth for cleaning.  
Do not use liquid cleaners or aerosol cleaners.

## 1.2 System Requirements

Before using this device, verify that you meet the following requirements:

- At least two AC 100V ~ 240V power outlets with standard home power wiring
- A computer with the following:
  - A:** Operating System of Windows XP, Windows Vista or Windows 7 <sup>3</sup>/<sub>4</sub>  
Operating System with TCP/IP installed
  - B:** Pentium III compatible processor and above
  - C:** Ethernet LAN card installed with TCP/IP protocol

## 1.3 Operating System Support

- WINDOWS 98/ SE/ ME/ 2000/ XP/ VISTA/ 7/ 8
- Macintosh
- LINUX

## 1.4 Packet Contents

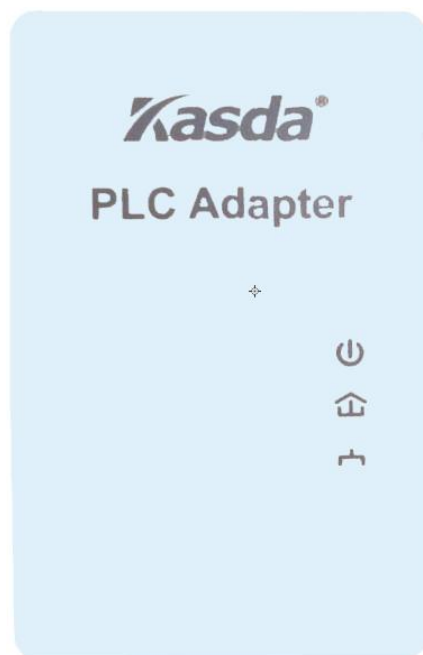
The packet contents are as the following:




- KP201 x 2
- CD x 1

## 2 Hardware Description

### 2.1 LED Indicator

The LED indicator displays information about the device's status.



Name	Color	Status	Function
	Green	Off	Power is off
	Green	On	Power is on
	Green	Flashing	The Homeplug is in power-saving Mode
	Green	Off	The Homeplug has not connected to Homeplug AV network or is in power-saving Mode
	Green	On	The Homeplug has connected to Homeplug AV network successfully
	Green	Flashing	The Homeplug is transmitting data over Homeplug AV network
	Green	Off	The Ethernet port is not connected to a device or the device is power off
	Green	On	A solid light indicates a connection on the Ethernet port
	Green	Flashing	Data is being transmitted through the Ethernet port

## 2.2 Physical Interface

There are three physical items on KP201 Adapter.



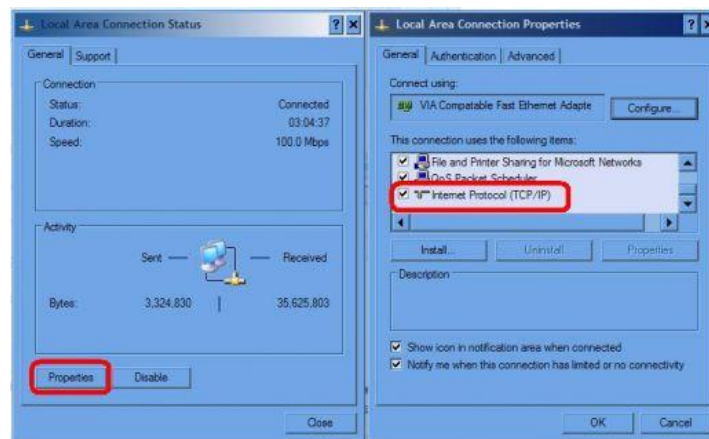
Item	Description
LAN	One 10/100Mbps Ethernet port connected to PC LAN card or broadband device
Power Plug	Power Plug connected to any 100V ~ 240V AC power socket
PAIR	Press and hold the Pair button for about 3 to 8 seconds, then release it. The Power LED will begin flashing. Perform the same step to the Rest of the Homeplug devices in 2 minutes

## 3 Installation

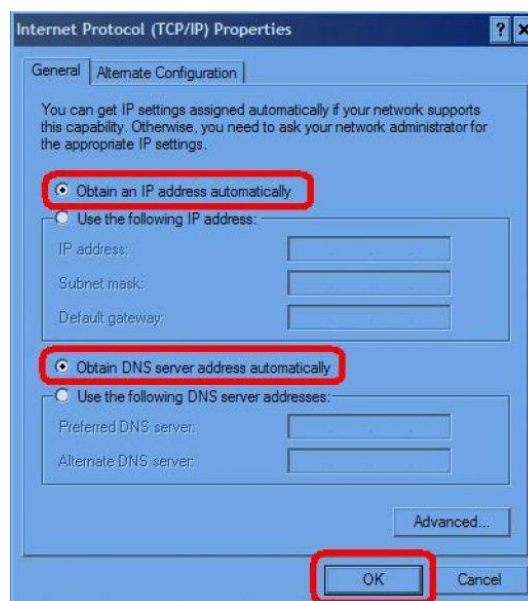
### 3.1 PC pre-configuration(Configured to dynamically access IP)

Dynamic configuration is only possible if you have a DHCP server. If there is a DHCP server, IP address can be configured dynamically by following the steps:

1. Click on **Start** menu.
2. Now go to **Control Panel**.
3. From the control Panel, go to **Network Connections**.
4. Double click on **Local Area Connection** and select **Properties** and then double click on **Internet Protocol (TCP/IP)**.



5. Form the Internet Protocol (TCP/IP) Properties window, select **Obtain an IP address automatically**. Later select **Obtain DNS server address automatically**.
6. At last, click on **OK** and finished configuring your computer's IP address.



By following the above steps, PC pre-configuration are finished..



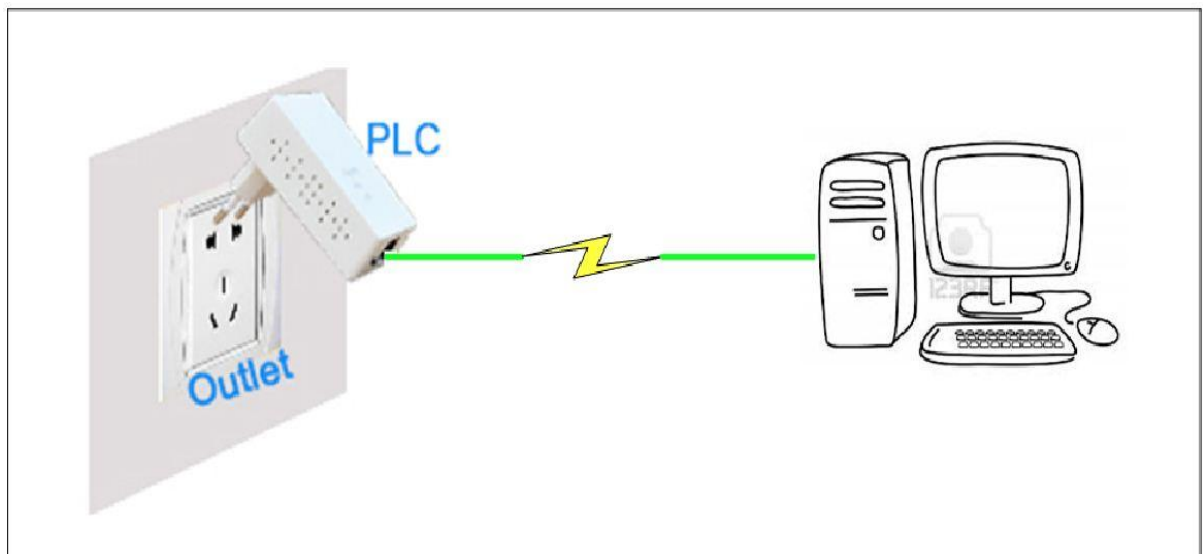
## 3.2 Hardware Connection

### 3.2.1 Hardware Connection - Computer

This section shows you how to connect Router. Meanwhile, it introduces the appropriate environment for the Router and installation instructions. For those computers you wish to be networked by KP201, each of the computers must be properly connected with an KP201 through an Ethernet (RJ-45) cable. Following are the steps to properly connect the KP201 device to your computer:

- 1 . Connect the provided Ethernet (RJ-45) cable to the KP201 device
- 2 . Connect the other end of the Ethernet (RJ-45) cable to your computer's LAN port.
- 3 . Plug the KP201 device into a wall socket next to the computer.
- 4 . Turn on your computer.
- 5 . Check and confirm that the **POWER** and **Ethernet** LEDs on the KP201 device are **ON**.

The hardware connection mechanism is shown below:



### 3.2.2 Hardware Connection - Internet

This section describes how to connect the KP201 device into your existing ADSL broadband connection via ADSL Ethernet port. Follow the procedures describe below to connect the KP201 device to your ADSL broadband connection:

- 1 . Connect the provided Ethernet (RJ-45) cable to the KP201's LAN port.
- 2 . Connect the other end of the Ethernet (RJ-45) cable to an available Ethernet port of your ADSL broadband Router(About router configuration,please consult with your ISP or router vendor).
- 3 . Plug the Powerline Ethernet Adapter into a wall socket next to the computer.
- 4 . Turn on your computer.
- 5 . Check and confirm that the **POWER**, **PLC** and **Ethernet** LEDs on the KP201 device are **ON**. Now all the configuration is complete,The hardware connection mechanism is shown below:

